

THE VOICE

May 2026



A COMMUNITY MAGAZINE FOR BOROUGH GREEN
PRODUCED BY THE CHURCH OF THE GOOD SHEPHERD AND
DELIVERED FREE TO ALL HOMES AND BUSINESSES.
WITH THANKS TO ALL COMMUNITY SUPPORT (see page 9).



Central Heating & Boiler Engineers

Gas * Oil * LPG

"you may not need a local & reliable boiler engineer today, just remember our name for the day you do"



Service Installation Repair



01732 885882

www.samsian.co.uk

G R SERVICING LTD

Now at Unit 16
Orchard Place Business Centre
Seven Mile Lane
Wrotham Heath



Servicing and repairing your vehicles.

MOTs can also be arranged.

PLEASE CALL
01732 882725 as before.

BOROUGH GREEN OPTICIANS

EST 1972
OPTOMETRISTS AND
CONTACT LENS CONSULTANTS

Monday, Tuesday, Thursday, Friday
9.00 - 5.30
Wednesday Closed
Saturday
9.00 - 1.00

- Full eye examination
- Cataract referrals
- Glaucoma check
- Free trial on most types of contact lenses



25, High Street
Borough Green
Kent
01732 884558

Email bgopticians@outlook.com

Spring has arrived with sunshine, blossom, longer days and the hope of summer around the corner.

Easter has come and gone. We've eaten our hot cross buns and chocolate and the shelves in the supermarket are being stocked with summer treats. It's easy to pack away Easter and move on but we are reminded that resurrection is not only something we proclaim at Easter but something we are invited to notice. It is there in small things: in gardens coming back to life, in friendships renewed, in burdens gently lifted, in courage slowly rediscovered.

Perhaps it's also something we can choose - to begin again, to forgive, to reach out or to take a small step towards hope when it would be easier not to.

As we move into May and we look ahead to the summer months, there is an invitation before us: to be people who reflect resurrection life in simple, everyday ways, to be patient where there is frustration, generous where there is need, attentive where others feel overlooked, to create space for rest and gratitude, noticing the goodness that God continues to give.

Summer often brings a change of rhythm - holidays, lighter evenings, perhaps a little more time to pause. May we use that time not only to refresh ourselves but also to reconnect: with God (perhaps in a quiet moment, a simple prayer, or just a walk with space to think), with one another and with the deeper purpose to which we are called.

The message of Easter doesn't stop at Easter. Christ is risen and new life is always possible. That is the hope we carry into the weeks ahead.

We would love you to share in that hope too. Whether you come to church often, rarely or not at all, you are always welcome to step inside, to sit quietly, to light a candle or simply to see what you might find.

Carole Simpson
Church Warden



NOTHING FROM THE PARISH REGISTERS THIS MONTH



Monday Minis Toddler Time

Play and socialising for pre-school children and their grown ups. **Monday 11 May** 10 to 12 noon in COGS annexe. No charge, just a donation for tea and coffee please.



Games, Tea & Chat



On **Monday 11 May** at 2 - 4pm in the annexe to the Church of the Good Shepherd. Come and enjoy board games, tea and a chat. Plenty of room for new folk so, if you are wondering whether it's for you, do get in touch and ask for more information or just turn up at 2.00. Contact Elaine Almond on 886440 or etalmond@aol.com

Church of the Good Shepherd Food Bank

Thanks to your continuing generosity we have been able to support many local families in need. Donations may be left in the Church's porch on any day - the Church is usually open 10am - 5pm.

We welcome donations of any non-perishable food. In addition, these items are especially helpful right now:

Tinned tomatoes, sweetcorn, other tinned veg / potatoes.

Tinned meat / meat pies, tuna & other tinned fish.

Kidney beans, chickpeas, lentils etc.

Baked beans, soup, spaghetti hoops / mac cheese.

Puddings / tinned fruit.

Pasta, rice / spaghetti, noodles / pasta sauce.

Cereal, breakfast bars.

Semi-skimmed long-life milk.

Marmite / jam / peanut butter.

Coffee, tea, hot chocolate.

Cartons of juice / bottles of squash.

Crisps / biscuits, sweets, chocolate.

Ketchup / sauces.

Shampoo, soap / nappies.

Cleaning products.



Thank you

For any enquiries regarding our foodbank please contact Ian Simpson on **07801135460** or foodbank.cogs@gmail.com.

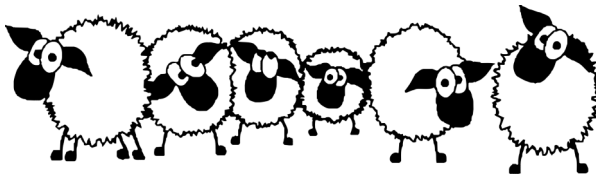
THE LOST SHEEP TRAIL

May Half Term Activity



Trail Sheets can be purchased (£1 each) during the week from Shakti News or on Saturday 23 May between 10am and 12 noon at the Church of the Good Shepherd.

Completed sheets may be returned to the Good Shepherd on Saturday 30 May between 10am and 12 noon where prizes can be collected. One prize per sheet.



Help us To Bring Our Lost Sheep Home

**Save the date for our
Summer Fayre
Saturday 27th June 2026
11am – 2pm
Featuring a Big Summer Raffle
Come and find us at
the Church of the Good Shepherd,
Quarry Hill Road, Borough Green**

Contacting the Church of the Good Shepherd



In the absence of a Vicar:

If you need to speak to someone from the church (including any enquiry about a wedding, a baptism or a funeral) contact one of the churchwardens –

Julie (885437) or Carole (07542 442 140).

If you have an enquiry about burial of ashes contact Elaine (886440).

COGS website www.cogsonline.co.uk

J & F
ACCOUNTANCY LTD
Chartered Accountants

Self Assessment Tax Returns

Self-Employed Accounts

Limited Company Accounts

Payroll & CIS

MTD for Income Tax Advisers

Tel: 01732 885444

1 Station Court, Station Approach
Borough Green, Kent TN15 8AD
Email: info@jandfaccountancy.co.uk
Web: www.jandfaccountancy.co.uk



**VEHICLE SERVICING
AND REPAIRS**

London House Works,
Station Road,
Borough Green

www.gsmechengineers.co.uk

email:
info@gsmechengineers.co.uk

Tel: 01732 885314

John Ballantyne
Handyman

All DIY work for reasonable rates

Painting and Decorating,
Flat pack assembly,
Curtain poles, Blinds,
Mirrors and Pictures fitted,
Jet Washing,
Fencing

General property maintenance
No job too small

Mobile: 07890 034846



J. Langstaff Ltd



Electrician

- Design and Installation
- Fuse Board Upgrades
- Security Lighting
- Full or Part Rewires
- New Builds and Extensions
- Additional Sockets & Lighting Points
- Garden Power & Lighting
- System Upgrades
- Fault Finding
- Landlord Inspections
- EICRs



Professional - Reliable - Courteous - Insured
All Work Completed to BS7671

Contact Jason:

T: 01959 525 136

M: 07817 733 257

E: jmllimited@aol.com

Notes from Borough Green Town Council



ESTABLISHED
APRIL 1934

The Council met at 7.30pm Tuesday 7 April 2026 at the COGS Annex. Matters raised included:

- **Borough Green was inaugurated as a Town Council on 1st April 2026.** The Chairman thanked the Clerk for his work changing the bank accounts and all regulations to "Borough Green Council". This year marks the 92nd anniversary of our incorporation as a distinct parish and a political entity in our own right and we are flying the Borough Green flag in celebration until St George's week. We do not know whether the change to town will give us the Greenbelt protection we seek, the Government changes its rules almost weekly, but it might work and it has cost us nothing. We can change back to parish status in the future once the danger is past if we want to.
- **South East Water** may have offered us some good news. In response to TMBC's recent Local Plan consultation they advise that, even with their planned investment, they will only be able to supply water to one third of the 19,000 houses the Government wants built in Tonbridge and Malling between now and 2042. This will also severely hamper all planning applications apart from replacements and extensions. It stands to reason that if SEWater cannot even maintain supplies to current users, they are unlikely to be able to cope with the Government's ever-increasing demands - we need housing desperately, just not quite as many as the Government mandate.
- **Bernie the Clerk** has put a lot of time into renegotiating all our power contracts and, with some new suppliers and new tariffs, we should achieve savings of some £2,900 per year.
- **Isles Quarry Bike Area** has finally had the threat of planning enforcement action lifted and, after a careful wildlife assessment, we will be allowing some of the scrub area outside the Ancient Woodland to be allocated to younger riders who want to get involved but find the existing jumps too challenging. We will shortly be siting a bench on the lower open area to allow oldies like me to rest my legs for a while. It is also a beautiful tranquil place to just take a moment to breath the silent fresh air and watch the wildlife. We regularly see deer there these days.
- **Nisa Stores** contacted me the other day - Steve and James are starting another round of support for local community groups - they can help with small projects and welcome you getting in touch. Contact them either by popping into the shop or emailing them at nisaborogreen@aol.com. This is a good point to let you know about the years of unsung behind-the-scenes support Steve and James and the rest of the Nisa team give our village. They have always supported events like the Christmas Lights, the Lunch Club and Borodara Christmas Dinners with either financial help or donations of food. They also helped fund and tend the planters in the High Street, including supplying the flowers. A local shop that truly deserves local support.

(Continued on page 11)

The Birkbeck Chiropody & Podiatry Practice

Health Professions Council (HPC) Registered Podiatrists

Open Monday to Saturday
Day and Evening Appointments
Easy Car Parking

Telephone: 01732 883271



Woodlands, 172 Maidstone Road, Borough Green, Sevenoaks TN15 8JD
T | 01732 883271 W | birkbeckpodiatry.com



DB Home & Garden Maintenance

*Carpentry † Painting † Decorating
Wooden Conservatory & Window Refurbs
Flooring † General Repairs*

*Hedge & Grass Cutting
Sheds † Summer Houses † Fencing
Decking † Patios*

No job too small! Fully Insured!

Tel: 01622 202475 - Mob: 07545 086827

Email: dbhomeandgarden@gmail.com

**A PALMER COMPLETE
ELECTRICAL SERVICES**

01732 886 939 07774 201 154

**ALL ELECTRICAL WORK
LARGE OR SMALL**

**FULL REWIRES, PARTIAL
REWIRES, FUSEBOARDS,**

**TEST CERTIFICATES,
SOCKETS, LIGHTING.**

**DOMESTIC COMMERCIAL
LOCAL AUTHORITY**

RELIABLE FRIENDLY SERVICE.

PORTLAND BENTLEY

*Painting & Decorating
Contact Paul*

email: portlandbentley1989@gmail.com

07939 401467

01732 886801

Delivering the Voice



We are looking for some help to deliver this magazine each month as a number of our current volunteers, who have been doing this for many years, are looking to wind down.



If you are willing to put your name forward to help with this, please contact Chris Atkins **01732 366615**.

Advertising

Any commercial bodies or people offering services who wish to advertise should contact **Chris Atkins** email chris.atkins1952@gmail.com or phone **01732 366615** about rates and availability of spaces.

If you have something you want to sell, a caravan or cottage you want to let for holidays etc then contact Margaret Jeffery. The cost of such personal notices are just £2 per issue.

The views expressed in articles are not necessarily those of the Editorial Team. The Editorial Team cannot accept responsibility for wrong information received, or mistakes that occur in publication. The Editorial Team cannot accept responsibility for any delay in distribution. Publication of advertisements does not imply any form of recommendation. All articles in this magazine are covered by copyright and permission must be obtained before reproducing them in any format.

The total print run of the magazine is over 2000 copies and it is also available to read on the COGS, BG Community and Council websites.

Thanks

Thank you to the Borough Green Council for their generous grant and to all our advertisers for their financial support which makes the production of this magazine possible. Also thank you to all our distributors who get the Voice to every house in the community.

Articles for the next magazine

The Voice is your community magazine and it relies on the people of Borough Green to make it as interesting as possible. Organisations, clubs and individuals are welcome to submit articles on their activities and subjects likely to be of interest.

The deadline for articles for the next magazine will be **Tuesday 12 May** and these should be sent to the address below. The next magazine will cover **June** so if you have any events planned for that month and you would like them to appear in the diary section please send to :-

m-jeffery@talktalk.net
01732 883978

Margaret Jeffery
7 Lendon Road
Borough Green
TN15 8SE

**WROTHAM COMPUTER
CARE**
Computer help
at your Home or Office

PCs and Apple Macs

We are a local company providing an affordable service to local families, professionals, businesses and schools.

For more details please contact us:

01732 780176 or 07795 552440

mwhite@wrothamcomputercare.com

www.wrothamcomputercare.com

J. Lawrenson
Tree and Fencing Specialist

- Hedge cutting, reduction and removal
- Tree pruning, felling and surgery
 - Stump and garden clearance
- All types of fencing supplied and erected, including panel and close boarded

Fully Insured
All waste and cuttings recycled

Please call James on
07759 137817
01732 849295

Or email
j.lawrenson@hotmail.com



**Professional Domestic
Cleaning Services**

Are you a busy mum?
Working long hours?
Just need extra help?

Give us a call for reliable DBS
checked staff and fully insured
service!

01732 792076

sophie@capablecleaners.co.uk
www.capablecleaners.co.uk



Privately owned local construction business with 25 years of industry experience with an unwavering commitment to our core values of collaboration, workmanship and integrity

- **Construction** - renovations, small conversions & extensions, registered installers of RubberBond flat roofing
- **Groundworks** - site preparation, block & beam, foundations, deep drainage & services, finishing surfaces
- **Maintenance & repairs** - all internal and external aspects of building maintenance
- **Landscaping** - hard landscaping including retaining walls

Get in touch to discuss your project

M: 07 733 697 877

Ph: 01732647014

E: info@muncalgroup.co.uk

W: www.muncalgroup.co.uk



- **Recreation Ground** has had its annual power wash and brush up to the play area, tennis, multicourts and paths. As well as clearing the build-up of dirt, it also keeps moss at bay, a big problem on the tennis court.
- **KCC Resurfacing A25 and A227** during June and July. This will largely happen overnight but watch our Facebook page for updates on the specific sections and timings. (I won't be churlish and add "it's about time".)

The next **Borough Green Council meeting** will be held on **Tuesday 5 May 2026 at 19.00 in the COGS Annexe**. The first half hour will be the Annual Parish meeting where the Chair and Clerk give their reports for the past year and local groups can present their own reports. The main meeting will start at **19.30** and, after the election of Chair and Vice Chair and appointments to committees and outside bodies, the agenda will include a period for public contributions and questions.

Council Contacts

Chairman mike.taylor@boroughgreen.gov.uk 01732 882880

Clerk clerk@boroughgreen.gov.uk 07568 536405

Full minutes are posted at [MINUTES](#) | [mysite \(boroughgreen.gov.uk\)](#)

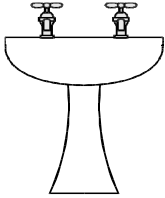


The **tennis courts** in BG Recreation Ground are for hire with keys available from NISA at £4 per hour per court.



Borough Green Fire Station firemen are hosting a charity car wash to raise funds for the fire fighters charity. Come and get your car washed and make a donation for a good cause. We would love to see you all on Saturday 2 May.

Karl Burrluck
Plumbing and Heating



01732 886984
07886 783 170

52 Western Road
Borough Green,
Sevenoaks
TN15 8AQ



“Help at an emotional time”

Borough Green,
Wrotham, St Mary's Platt, Ightham
& surrounding villages
01732 780600

43 Western Road, TN15 8AL
boroughgreen@welhamjones.co.uk

- ◆ Traditional & Contemporary funerals
- ◆ Eco-friendly funerals & woodland burials
- ◆ Private chapel of rest ◆ Home arrangements
- ◆ Memorials & keepsakes



www.welhamjones.co.uk



Extensions - Loft conversions
Internal & External Alterations
Full Planning &
Structural Engineers Service
References Always Available

www.honeycombconstruction.co.uk
(01732) 883443
07989 509 630

Wrotham ARTS Festival



Come and join us on 8th-10th May 2026

Friday and Saturday 10am to 5pm, Sunday 11 am to 4pm

St George's Church in the heart of the village will be exhibiting and selling amazing work from over 35 local artists. The work ranges from oils, pastels, pencils, watercolour, ceramics and photography too.

Refreshments will be available in the village hall where you can see a range of unique crafts.

There will be music and entertainment.

Enter the Artists Lottery for your chance to win an original piece only £1



A FREE event the whole family can enjoy!

We accept cards and cash (but prefer just card payments).
Please join us on Facebook at www.facebook.com/wrothamarts

HEALTH & WELLBEING ROADSHOW

Thursday 14 May 10am - 4pm
The Stag Theatre, Sevenoaks, TN13 1ZZ



(A free NHS event organised by Sevenoaks Primary Care Network)

CANCER AWARENESS

Presentation from Bowel Cancer UK & Prostate Cancer UK on signs, symptoms, risks and screening.

Join us for an all-day Macmillan Coffee morning!

ACCESS TO HEALTHCARE

Talks on NHS services offered by Sevenoaks PCN, West Kent Primary Care and Pure Physiotherapy.
Meet your GP's Patient Participation Group.

CHILDREN AND YOUNG PERSONS SERVICES

Find out about and meet representatives from health, community and charity services for children and young people



LIFESTYLE

Free Mini Health checks
Exhibitions from Diabetes UK and Everyone Active
Info on Kent county Council's innovative Connect2Work scheme.



MENTAL HEALTH

Representation from Kent and Medway Talking Therapies, Sevenoaks Mens Sheds and Domestic Abuse services.



AGEING WELL

Hear from Kent Community Health Foundation Trust about the first NHS Ageing Well service in Edenbridge and their Day Centre.
Representation from Alzheimer's and Dementia Support Services and Hospice in the Weald

MENOPAUSE

Hear from Dr O'Neill, GP with special interest in Women's Health on the symptoms of Menopause and how to access the Community Gynaecology Clinic at Borough Green Medical Practice.

Scan the QR code for a full list of exhibitors and talk times



Or go to

<https://sevenoakspcn.gpweb.org.uk/news/events/health-wellbeing-roadshow-14th-may-2026>

The event will involve a mixture of stalls and talks with a Macmillan coffee morning throughout the day. The talks are:

- 10:30 - 11:00 Introduction by Sevenoaks Primary Care Network and West Kent Primary Care
- 11:00 - 11:40 Kent Community Health Foundation Trust - Ageing Well and Day Centre
- 11:50 - 12:20 Hospice in the Weald - Living Well and Children & Young People's Service
- 12:30 - 1:00 Menopause by Dr O'Neill
- 1:30 - 2:30 Bowel Cancer UK and Prostate Cancer UK
- 2:30 - 2:50 Male IDVA and Domestic Abuse Advocacy Services
- 3:00 - 3:30 Pure Physiotherapy
- 3:30 - 4:00 Closing remarks by Sevenoaks Primary Care Network

We are pleased to say that works are finally underway with the toilet refurbishments, something that our hirers have been waiting for for some time. This work includes a full renovation of the accessible/disabled toilet facility and a much-needed revamp of the upstairs ladies' toilet with a new floor and fresh decoration.

Everything seems to cost more than expected and finding asbestos in the hall has set us back both financially and in time. However we are managing to find ways of overcoming these hurdles as we go along. Being a charity, it is incumbent on us to make sure that we spend your money wisely and, while we are keen to support local businesses, we must ensure that we are getting good value for money.

We are pleased that both have been achieved by finding excellent local tradesmen and we would particularly like to thank Steve Wilson for his decorating skills, Andy from On Call Carpets and Alex from Heat Cool for plumbing support. In addition to working on keeping costs down, our treasurer has done a great job in obtaining a grant to support this refurbishment.

We apologise for all the noise and inconvenience to you all and particularly to our regular hirers for your patience and understanding while these works are carried out.

Breaking news..... we are delighted to announce our dedicated meeting room is now available to hire at a rate of only £10 per hour. It is ideal for working, private tutoring or small meetings/a quiet space. This office could be just the place you are looking for. For more details visit our Facebook page or our website www.boroughgreenvillagehall.co.uk.

We will continue to push on with more significant improvements and we hope you like what is being done. Thank you for comments and for supporting our efforts on your behalf.

Bryan Rawlins
Chairman

Easter flower arrangements at the Church of the Good Shepherd



Events in the community for the month of May

- 1 BG Lunch Club - BGVH - 10.00 to 1.00
BG Library - Baby Bounce and Rhyme Time - 10.15 to 10.45
- 2 BG Fire Station - Charity car wash - 9.00 to 1.00
Saturday Open House - COGS - 10.00 to 12.00
- 3 SJCC - Mass - 9.30
COGS - All-Age Worship - 10.00
BGBC - Service - 10.30
- 5 BG Library - Scrabble Club - 2.15 to 4.15
BG Council Annual Parish Meeting - COGS Annexe - 7.00
BG Council Annual Meeting - COGS Annexe - 7.30
- 6 Sticky Fingers - BGBC - 10.00 to 11.15
- 7 SJCC - 10.00 Mass followed by Adoration
BG Lunch Club - BGVH - 10.00 to 1.00
BG Library - Coffee & Chat - 10.15 to 12.15
- 8 BG Lunch Club - BGVH - 10.00 to 1.00
BG Library - Baby Bounce and Rhyme Time - 10.15 to 10.45
Wrotham Arts Festival - see page 13
BG Library - Friday 2 Book Club - 2.15 to 4.15
Wrotham Historical Society - 7.45 - Wrotham Cricket Pavilion
- 9 **Saturday Open House - COGS - 10.00 to 12.00**
Wrotham Arts Festival - see page 13
- 10 SJCC - Mass - 9.30
COGS - Holy Communion with Rev Clive Wood & Children's Church - 10.00
BGBC - Service - 10.30
Wrotham Arts Festival - see page 13
- 11 **Toddler Time - COGS Annexe - 10.00 to 12.00**
BG Library - Natty Stitchers - 10.00 to 12.00
Games, Tea and Chat - COGS Annexe - 2.00 to 4.00
BGVH - u3a meeting - 2.00
BG Library - TLC Bookworms - 2.15 to 3.30
- 12 BG Library - Scrabble Club - 2.15 to 4.15
- 14 SJCC - 10.00 Mass followed by Adoration
BG Lunch Club - BGVH - 10.00 to 1.00
BG Library - Coffee & Chat - 10.15 to 12.15
- 15 BG Lunch Club - BGVH - 10.00 to 1.00
BG Library - Baby Bounce and Rhyme Time - 10.15 to 10.45
- 16 **Saturday Open House - COGS - 10.00 to 12.00**
- 17 **COGS - Breakfast Church - 9.00**
SJCC - Mass - 9.30
BGBC - Service - 10.30
- 18 BG Library - Natty Stitchers - 10.00 to 12.00
- 19 BG Library - Scrabble Club - 2.15 to 4.15



- 20 Sticky Fingers - BGBC - 10.00 to 11.15
- 21 SJCC - 10.00 Mass followed by Adoration
BG Lunch Club - BGVH - 10.00 to 1.00
BG Library - Coffee & Chat - 10.15 to 12.15
- 22 BG Lunch Club - BGVH - 10.00 to 1.00
BG Library - Baby Bounce and Rhyme Time - 10.15 to 10.45
- 23 **Saturday Open House - COGS - 10.00 to 12.00**
- 24 SJCC - Mass - 9.30
COGS - Holy Communion with Canon Brian Stevenson - 10.00
BGBC - Service - 10.30
- 26 BG Library - Scrabble Club - 2.15 to 4.15
Ightham Gardeners' Club - Ightham Village Hall - 7.00
- 28 SJCC - 10.00 Mass followed by Adoration
BG Lunch Club - BGVH - 10.00 to 1.00
BG Library - Coffee & Chat - 10.15 to 12.15
- 29 BG Lunch Club - BGVH - 10.00 to 1.00
BG Library - Baby Bounce and Rhyme Time - 10.15 to 10.45
- 30 **Saturday Open House - COGS - 10.00 to 12.00**
- 31 SJCC - Mass - 9.30
COGS - TBA - please see the church notice board
BGBC - Service - 10.30



Note: COGS Services maybe be subject to change in the interregnum.

Abbreviations

COGS	Church of the Good Shepherd	BGBC	Borough Green Baptist Church
SJCC	St Joseph's Catholic Church	BGVH	Borough Green Village Hall



IGHTHAM & DISTRICT GARDENERS' CLUB

Invite you to our May meeting.
We have a talk on

"Clematis through the seasons"

by Everett Leeds

TUESDAY 26 MAY
IGHTHAM VILLAGE HALL
for 7.00pm

Visitors very welcome
For further information contact -
Dee Samways - 0779 900 2129
or IghthamDGC@hotmail.com



Wrotham Historical Society

Friday 8 May 7.45pm
Wrotham Cricket Pavilion

King Alfred the Great

His successful fightback
against the Viking Invaders
and subsequent creation of
Anglo-Saxon England



A talk by James Dickinson

All visitors welcome - £5

TONBRIDGE AND MALLING BOROUGH COUNCIL – LOCAL PLAN



An update on the Local Plan consultation was provided to TMBC's Housing and Planning Scrutiny Select Committee for their meeting on 17 March. Papers relating to the meeting can be viewed via the Browse Meetings 2026 page on the Council's website. The minutes of this section of the meeting are as follows:

"Members were provided with an update on the Local Plan Regulation 18 (stage 2) Consultation that took place between 10 November 2025 and 2 January 2026. An update on Local Plan transport work and the associated financial implications was also provided.

Summaries of the feedback received, individual question responses and analysis and supporting information was available on www.tmbc.gov.uk/local-plan-responses.

General key themes from those responding to the consultation had expressed views in respect of overall housing numbers, scale/location of proposed site allocations, infrastructure capacity especially highways, water, healthcare and schools, greenbelt protection and the adequacy of supporting evidence. Concerns about the impact of development on local character, heritage and the environment were also raised.

With regard to the emerging risk from South East Water's response to the Local Plan consultation and concerns around their capacity to provide sufficient water supply to new development, it was confirmed that discussions with Government, South East Water and neighbouring authorities was ongoing. Further guidance was awaited and Members would be updated as soon as possible.

Particular reference was made to the further transport related work required to inform and support the next stage in plan-making for the Regulation 19 Local Plan, as detailed in 12.3 to 12.7 of the report. In summary this included further testing for a preferred growth scenario for Regulation 19, more detailed junction design and mitigation testing and integrating the findings into the Infrastructure Delivery Plan. Microsimulation modelling was currently being investigated for Tonbridge and M20 Junction 6. This could be in the region of £45,000 up to £80,000 respectively, dependent on whether an existing model could be updated and built upon.

There was detailed and robust discussion in relation to the perceived adequacy of junction analysis and the realism of modal shift assumptions, the risks associated with missing the statutory deadline for plan submission, including potential Government intervention, speculative development and uncertainty due to local government reorganisation. The importance of maintaining progress and meeting the December 2026 deadline for submission of a Local Plan was recognised. Members would receive regular updates via the Housing and Planning Scrutiny Select Committee and wider engagement sessions.

In recognition that the Local Plan, once adopted, would be the key planning document for Tonbridge and Malling, Cllr King proposed, Cllr Thornewell seconded and it was recommended to Cabinet that:

(1) the responses received to the Regulation 18 Local Plan Consultation and their publication on the Borough Council's website be noted and endorsed;

(2) the Regulation 18 Local Plan Consultation question response summaries and associated officer comments, as published on the Borough Council's website be endorsed;

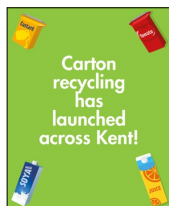
(3) the Regulation 18 Local Plan Consultation responses be fully considered in the preparation of the Tonbridge and Malling Borough Council Regulation 19 Local Plan; and

(4) the update provided in relation to progress on transport evidence for the Local Plan and the potential cost implications of the work proposed be noted."

The matter was then considered at the Council's Cabinet meeting on 7 April and all the recommendations were agreed.

TONBRIDGE AND MALLING BOROUGH COUNCIL - OTHER UPDATES

Water Supply and Planning Applications. In light of South East Water's response to the Local Plan consultation, TMBC has strengthened the existing approach to the consideration of how water infrastructure is taken into account when determining planning applications. Historically this issue was considered to be met when planning applications were assessed and determined through South East Water's Water Resources Plan. Planning applicants will now be required to demonstrate compliance with the current policy by clearly addressing whether there is adequate water infrastructure available, or whether it can be provided, to meet the needs of the proposed development. For more information go to www.tmbc.gov.uk/planning/water-supply-planning-applications.



You can now recycle liquid cartons (juice, milk, plant based drinks, soup and sauce cartons) in the green lidded recycling bin. Please rinse cartons and leave the caps on.

Job Fair. If you're job hunting or thinking about a fresh start in a new sector, don't miss our Jobs Fair on **Wednesday 29 April** at the Angel Centre, Tonbridge. Drop in any time between 10am and 1pm to meet employers from a wide range of sectors, including logistics, retail, construction and care. You can also pick up tips on CV writing, interview skills and how to stand out to recruiters. There's no need to book - just come along and take the first step towards your next opportunity.

Tonbridge Food Festival Saturday 30th and Sunday 31st May between 11-6pm on Tonbridge Castle Lawn. Try, taste and buy from more than 70 stallholders selling a range of food and drink produced in and around Kent and across the globe. Lots of fun activities planned to entertain the whole family including an exciting programme of cooking demonstrations from popular local chefs, food producers and local food writers. Free entry.





Tuesday 7th July

Herne Bay & Whitstable

Time to enjoy some fresh sea air!

Our time will be split between these two Kent coastal towns with the morning in Herne Bay and the afternoon in Whitstable.

You may even like to consider the 5 miles coastal path walk between the two!!

£35.00pp

Book your place now to avoid disappointment!

Email: lisa@ljtravel.co.uk

Call: 01732 886968

Or pop in to see us: 34 High St, BG. TN15 8BJ



COTOR FLOORING LTD

DOMESTIC & COMMERCIAL FLOORING

70 Western Road, Borough Green, Sevenoaks, TN15 8AH

Your local family run flooring company.

- Carpets
- LVT
- Vinyl
- Laminate

Contact us today for your new floor and a free no obligation quote



01732 885849



sales@cotorflooringltd.co.uk



07853093540

Borough Green & Wrotham u3a



Just a reminder that Borough Green and Wrotham u3a monthly meetings are held on the second Monday of each month at 2 pm in Borough Green Village Hall, with tea, coffee, and biscuits. Parking/disabled access available.

At our meeting on **Monday 11 May** we welcome back Ross Newham who last year gave us a very interesting talk on the East Malling Research Station. This time his talk is on 'Moths - from much maligned pests to saviours of the planet - perhaps...!'. Ross will provide the audience with a fascinating, yet light-hearted, look at moths, dispelling the myths and singing in praise of the fantastic contributions that these unlikely heroes can and do offer us all!

We look forward to welcoming existing and new members (free) and guests (£5). Parking is free for village hall users, so please remember to register your car in the village hall lobby when you arrive.

For further information, or to join your local u3a, please contact: info@bgwu3a.org.uk or visit our website <https://bgw.u3asite.uk>



Local Priorities E-Scooters/nuisance motorcycles Seizure



Kent Police

E-Scooters/nuisance motorcycles have been raised as a concern in the feedback from the local area in a recent priority survey. Early in April officers seized an adapted e-bike and an e-scooter during patrols in the area. Both vehicles were being used in a manner that made them illegal for use on public roads and posed a risk to public safety. We will continue to take action against vehicles that do not meet legal requirements, particularly where their use causes concern within the community. Our aim is to keep everyone safe and address issues raised by residents

If you have concerns about anti-social behaviour, road safety, or illegal vehicle use in your area, please report it to the police online, on 101, or 999 in an emergency so we can take appropriate action. Advice and information can be found on the Kent Police website.

Tackling antisocial behaviour can be a complex issue and one which requires input and action from more than just the police. February 2025 saw the publication of the Ministry of Justice Crime and Policing Bill: Antisocial behaviour (ASB) factsheet. This outlined a number of new measures including making powers to seize vehicles under section 59 of the Police Reform Act 2002 easier to use, allowing the police to react robustly and immediately to the anti-social use of motor vehicles.

If you ever experience this issue or have information regarding an incident, please report it using our online reporting tools at <https://www.kent.police.uk>, speak to an operator in our Force Communications Room via our online web chat or call the non-emergency number 101. Alternatively, you can stay 100 per cent anonymous by contacting the independent charity Crimestoppers on 0800 555 111 or via their untraceable online form at

www.crimestoppers-uk.org/give-information/forms/pre-form



Painter and Decorator

38 years experience

Interior & Exterior

Free Estimates

Friendly and reliable

Call Steve 07811 360269
www.jarvisdecorating.co.uk

Stephen P. Gay Funeral Service

Proudly the oldest family run funeral directors in the area, providing professional service with compassion to Kent families since 1982

9 Western Road,
Borough Green TN15 8AL

01732 780222
b.green@stephensgay.co.uk

We put you and your loved-one first.

Personalised funerals * Sincere prices * Home visits
Memorials * Pre-paid funeral plans * Repatriation
All faiths and religions,
as well as non-religious



KB

KINGSLEY BOND
SOLICITORS

WE HAVE ARRIVED

14A WESTERN ROAD

BOROUGH GREEN

SEVENOAKS, KENT, TN15 8AG

All enquiries – 01732 904704

lorraine.pearce@kingsleybond.co.uk

AROUND BOROUGH GREEN

Borough Green Council's Green Spaces



Crowhill



Isles Quarry East

A map of Public Rights of Way and Permitted Paths in Borough Green is available on the green spaces page of the Council's website

www.boroughgreen.gov.uk

BOROUGH GREEN LIBRARY

The library is open – with a wide range of services, from free access to books, computers, WiFi and information on the hire of music, audio books and films.

Opening hours are

10 - 1 and 2 - 5 on Monday, Tuesday, Thursday and Friday
and 9 - 1 on Saturday.

Events for which no booking is required see diary section

Ancestry - Monday 10 - 12 need to book an appointment

For more advice please call the library on 03000 413 131 or
email boroughgreenlibrary@kent.gov.uk where staff will be able to help.

We look forward to seeing you.



ORGANISING A GET TOGETHER OR CELEBRATION?

Look at these tempting benefits for both you and your guests:

- Free Room Hire
- 10% discount on all bar drinks for your guests
- 10% saving on pre-booked wine
- 20% discount on our Spirit Health Club Beauty Treatments

Please **contact us online** or call the dedicated events team directly on
01732 781 582 quoting **'FUNCSAVE'**
events@himaidstone.com | www.himaidstonehotel.co.uk



**Shires
Heating
Services**



07921 197780



ben@shiresheatingservices.com

- Boiler servicing
- Boiler breakdowns and repairs
- New boiler installations and system upgrades
- Power flushing / system cleaning
- Aga and Rayburn servicing and repairs
- Unvented cylinder service and repairs
- LPG, oil and leisure park homes / caravans
- Landlords gas safety records
- Cooker and gas fire servicing
- Radiator repairs and replacements



www.shiresheatingservices.com



Reuse Shop at Allington Household Waste Recycling Centre

The Allington reuse shop has been operating for 6 months and in that time over 30,000 items have been donated by residents and nearly 20,000 items have been sold.



This initiative is designed to help residents recycle, donate and bag a bargain. The shop sells good quality, pre-loved items at affordable prices. If an item can be reused, it can be dropped off at the shop - everything from A-Z: antiques, books and children's toys to xylophones, yoga mats and even zebra print rugs ready

for a new home. As well as items taken to Allington the shop is stocked with reusable items accepted at most other KCC HWRCs (including Sevenoaks and Swanley). A portion of the profits from the shop goes towards local charities with the rest reinvested into the service to support the expansion of KCC's reuse initiatives across the county.

Residents can book appointments to use the Allington HWRC for recycling, waste disposal and to donate items via www.kent.gov.uk/allingtonhwrc but no booking is needed just to browse the shop.

New accessibility improvements open up Trosley Country Park to more visitors

Visitors to Trosley Country Park can now enjoy improved access to one of Kent's most valued landscapes, following the completion of major enhancements funded through a grant of about £180,000 from DEFRA's Access for All programme.

KCC has delivered a suite of new inclusive features designed to ensure that people of all abilities can explore the park safely, confidently and independently. The upgrades include:

- A newly surfaced accessible stretch of the North Downs Way, enabling access for all to reach the wood henge sculpture, woodland areas and sweeping viewpoints across Kent.
- A new all-terrain tramper mobility vehicle, allowing more visitors to explore the park's trails; demand for trampers is already high across Kent Country Parks, with more than 1,000 registered users at other sites.
- A fully compliant Changing Places Toilet which gives visitors the confidence that they can visit and stay for longer, knowing the right facilities are available.

These enhancements form part of KCC's long-term commitment to improving accessibility across its country parks, helping more people connect with nature and benefit from the health and wellbeing value of spending time outdoors.



Greenacres

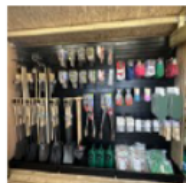
Borough Green Road, Ightham, TN15 9JA

01732 884726

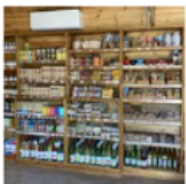
Local Asparagus and Strawberries Now available!



- Bedding plants, vegetable plants, soft fruit and seeds
- Fruit trees, shrubs, roses, perennials and herbs



- Compost, pots, fertilisers, logs and charcoal
- Gardening tools and planting accessories



- Local farm produce, cheeses, biscuits, eggs, bread and ice cream
- **Rombouts** coffee available in farm shop

Open every day: 9am - 5pm

sales@greenacresgardencentre.co.uk





WROTHAM (ST. GEORGE'S) CRICKET CLUB

In the hope that the 2 days of sunshine we have had aren't the last, and will return when we have started playing, attention will move from indoor nets to the playing fields of Chevening at the end of April. It will be good to see the success - or otherwise - of the major recruitment campaign which has gone on over the last couple of months on the first team sheet of the season.

As usual the efforts of the few have been hard at it cutting and rolling the square in readiness for the first home game on 3 May. Please come and support the village side then and on subsequent home matches on 31 May and 7 June.

Nearer the time outdoor nets for Wrotham's men's team will be held at the ground on Wednesdays from 6 until 8pm Come and try us out!

John Humphreys



Platt Junior Cricket Club

PLATT CRICKET CLUB are excited to be running another season of ECB accredited cricket programmes Allstars and Dynamos. It is an 8 week programme starting on **Saturday 25 April** at Stonehouse Field at 10am.

For more information and to sign up go to

All Stars 5 - 8 yrs <https://ecb.clubspark.uk/Book/7b9c4301-89da-4d16-821e-1f7a736d33be?venue=plattjunior>

Dynamos 8 - 11 yrs <https://ecb.clubspark.uk/Book/cbb12ef3-528c-4a6c-85af-b9f0311473e4?venue=plattjunior>



 Songs for a summer evening
King's Men

St Peter's Church Ightham TN15 9JD
14th July 2026 Bar 7pm Concert 7.30pm

Tickets £25 by phone or in person:
The Hutch Deli, Sevenoaks Road,
Ightham, Sevenoaks TN15 9AD
01732 781134



Photo: Martin Bond
<https://www.kingsmencambridge.co.uk>

SMALL NOTICES



**PROTEGO
PEST
CONTROL**

Matt Rose

Mobile: 07897314478

Email: info@protegopestcontrol.co.uk

Website: www.protegopestcontrol.co.uk



Clock Kent

Clock & Watch repairs,
restoration & servicing
Collection & delivery available.



Call Paul on 01732 884363 / 07831 884789

or email: paul@clockkent.com

www.clockkent.com



MUAY THAI FITNESS CLASSES

No contact, beginner friendly Muay Thai fitness classes for ages 16+
Muay Thai Boxing techniques, cardiovascular exercises, self-defence,
whilst building confidence, functional strength and body conditioning.

FIRST CLASS IS FREE!

EVERY MONDAY 7:30-8:30 PM

At Borough Green Village Hall



Contact Charlie:

aceevolve@outlook.com

07535708654

aceevolvefitness.co.uk

Phone Sockets/Broadband

25 YRS BT ENGINEER - FULLY INSURED

- New Phone & Broadband sockets / extensions
- Fault finding repairs / Improve broadband speeds
- Cat 5 wiring
- Internal/external re-routing and tidying of cables prior to double glazing

Tel: G. NUGENT **07845 705900**

www.fixyourline.co.uk



Give blood

For details about making an appointment for
a blood donation go to www.blood.co.uk or
phone **0300 123 23 23**.



Hall bookings

Parish Hall - Quarry Hill

Alan Williams 07436 115 425

Village Hall

David Peirce

www.boroughgreenvillagehall.co.uk

01732 646040

Potters Mede

Bernard Galopin 07568 536 405

Defibrillator Locations

a) **24 hours a day**

The Village Hall

Potters Mede

The Recreation Ground

The Fire Station

b) **When premises are open**

The Medical Centre

BG Primary School

Fourways Dentists





Raise money for The Heart of Kent Hospice with the Bluebell Walk on 3 May.

The walks take place in the period 8:00 - 1:00pm starting from Glebe Field, Marley Road, Harrietsham, ME17 1BS and follow a picturesque leisurely six-mile ramble amongst stunning bluebells and through enchanting woodland on the North Downs.

Step into a day to remember as your journey begins at our vibrant event village, where a selection of refreshments will be available to purchase on arrival. Walkers will set off in relaxed waves following our fully guided routes. Along the walk, visit our peaceful **Field of Remembrance**. Enjoy a cold drink, reflect or simply relax with a picnic of your own. You'll also find our **memory wall** along the route at this picnic spot, where you're invited to dedicate a message - write a name, a note, or a simple thought and add it to the wall in remembrance.



Each ticket includes a Bluebell Walk branded T-shirt, giving you a lasting keepsake from the day and a way to show your support long after the walk is over.

When buying a fundraising ticket, you are pledging to raise funds for Heart of Kent Hospice, which will enable us to continue supporting those at the end of their lives and their families.

For more details go to <https://register.enthuse.com/ps/event/BluebellWalk2026>

Heart of Kent Hospice Charity Shop in the High Street

The opening hours are from 9.00-4.00 Monday to Friday and 9.00-1.00 on Saturday. Look out for flash sales. The next one will be on **Thursday 21 May** from 2.00 to 4.00 with most items for sale at just £1.

What is Time for a Cuppa?



Make your cuppa count this May

Time for a Cuppa is Dementia UK's tea party fundraising event in May. It's a fantastic way to get together with friends, family or colleagues to share cake and a cuppa and raise vital funds for families facing dementia.

Making Time for a Cuppa couldn't be easier – simply pick a date, choose your venue and invite your guests. You can hold an event wherever you like: at home, in your local community, at work or in a care home.

Register at <https://fundraise.dementiauk.org/event/timeforcuppa26> to set up your personal fundraising page and to get free fundraising pack.

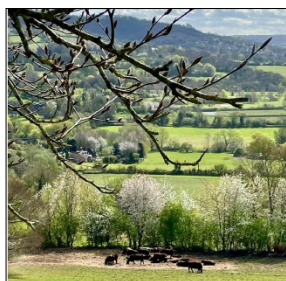


Tonbridge and Malling Ramblers

You don't have to be a Ramblers member to try up to three 'taster' walks with us. If you're new to our walks, please contact the walk leader to check that their walk will suit you. For details of these and other upcoming walks and walk leaders see our Facebook page at www.facebook.com/groups/tonbridgeandmallingeramblers or visit www.tonbridgeandmallingeramblers.org.uk.



May	Route	Distance in miles
Sunday 3rd	Circular walk from Shoreham to Lullingstone with a climb up the side and along the Darent Valley for great views going towards Lullingstone. Moderate difficulty.	7
Thursday 7th	Horsmonden Iron Industry Circular: a leisurely and peaceful walk taking in some wonderful views and part of the High Weald Landscape Trail. We will pass through woodland, meadows, hop vines, apple orchards and parkland belonging to the Shirrenden Estate. Some stiles and quiet lane walking.	5.5
Sunday 10th	Leisurely circular walk from Matfield through Petheridge and Becketts Grove.	5
Thursday 14th	Circular walk from Penshurst Place, up the hill past Well Place Farm and down Killick's Bank. Then walk beside the River Medway to Haysden Country Park and around Haysden Water and Barden Lake. Moderate difficulty.	5
Sunday 17th	Circular walk from West Peckham along the Greensand Way through orchards and past Old Soar Manor, on the way to the Wealdway and Hurst Wood, returning via Peckham Hurst. The walk is a mix of bridleways, footpaths, orchards and woods. The return is on quiet lanes. Moderate difficulty; one stile.	5.4
Thursday 21st	Circular walk from Hollingbourne. Moderate difficulty.	5.5
Thursday 28th	Circular walk from Wrotham up the North Downs to Stansted. Steep climb at the start with views to the south. Spot the war memorials to crashed WW2 aircraft. Moderate difficulty.	5.5
<p>Walks usually start mid-morning. There's a short half-way break (bring refreshments) and we usually finish near a pub. Most walks are dog-friendly (see website).</p>		



Spring in the Darent Valley - 3 May walk

PLD GENERAL BUILDER

PETER 07769 736646
Borough Green 01732 382530
(answer machine)

Extensions
Refurbishments
Brickwork
Driveways
Fascia & Soffits
GRP Flat Roofing
Conversions
Plastering
Patio
Kitchens / Bathrooms
Fencing
Painting & Decorating

AND ALL GENERAL BUILDING

LOCAL LOCKSMITH

NO CALL-OUT FEE! 24HR SERVICES

- ✓ uPVC / DOUBLE GLAZING / PATIO DOORS & WINDOW LOCK REPAIRS.
- ✓ JUST MOVED IN ? WHO HAS A KEY ? COMPLETE LOCK CHANGE SERVICE.
- ✓ LOCK-OUTS / LOST KEYS / BROKEN LOCKS.
- ✓ EMERGENCY LOCK & DOOR OPENING.
- ✓ DOMESTIC & COMMERCIAL WORK.
- ✓ ALL TYPES OF LOCKS / HARDWARE SUPPLIED & FITTED.

Call Paul on:

07506 451405

graves972@btinternet.com

PaulGraves
Locksmith

Checkatrade
Ave Score 9.95 | Over 1200 Reviews
Checkatrade ID 311650

FOURWAYS ENGINEERING



EST. 1973

**Specialists in all Classic and Sports Car Restoration
and all Vehicles General Servicing**

Unit 12 Platt Industrial Estate, Maidstone Road,

St Marys Platt, Sevenoaks, Kent, TN15 8JL

Telephone: 01732 884 288

Email: info@fourwaysgroup.co.uk

Do you struggle out of bed?
Is walking difficult or painful?
Have you an injury that just
isn't getting better?

Contact Carole Simpson
Experienced and specialist
physiotherapist

01732 780909

**Stay active and start
enjoying Life**

Carole@boroughgreenphysio.co.uk
www.boroughgreenphysio.co.uk



The Studio at Windy Nob, Staleys
Road, Borough Green TN15 8RL



Residential Sales, Lettings & Valuations

**Independent Village
Estate Agent
Dedicated to helping you**

Our fee is only 1.2% + VAT

Call now for a free valuation

01732 884422

enquiries@hillier-reynolds.co.uk

3 Sevenoaks Road, Borough Green,
Kent, TN15 8AX

**Free Sales &
Rental Valuations**

with **expert advice** to
help you achieve the
best price!

Your **local experienced estate agent**
providing an outstanding,
professional & friendly service

07429 483 423

jonathan.hall@exp.uk.com

jonathanhall.exp.uk.com

JONATHAN HALL

MEMBER OF
exp UK



Sevenoaks Road, Ightham,
TN15 9AD

For All Auto Queries

01732 780591 07747535657

All makes and models
MoTs

Free courtesy car
Free local collection and delivery

Brakes Servicing
Repairs No. Plates

All mechanical and diagnostic
work carried out by
qualified automobile engineers