

IGHTHAM LOCAL PLAN SITES

Q5 & Q6 SPATIAL STRATEGY OPTION CHOOSE #ONE - DEVELOPMENT ONLY ON NON-GREENBELT LAND

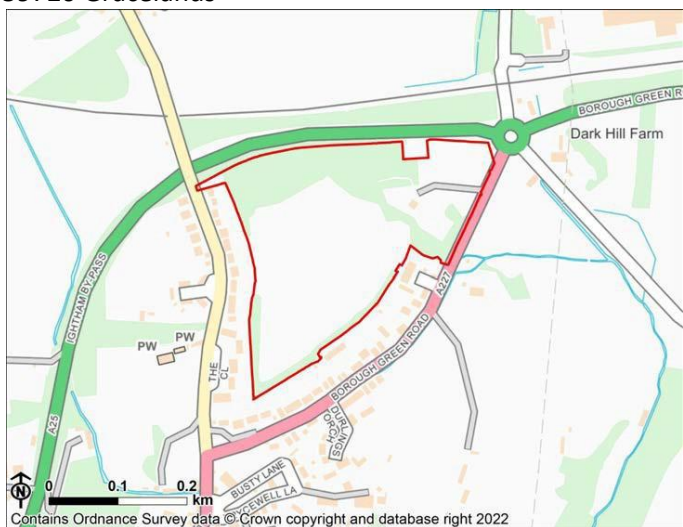
Site No	Name	Planning Considerations	
59720	Gracelands		
59871	Gracelands		
59709	Darkhill Farm		
59770	A25 Adj Rectory Lane		
59608	ISMAYS RD		
59793	BG Road		
59872	IGHTHAM BYPASS		
59830	<b>Borough Green Garden City</b>	<b>3000 houses</b>	

Respond to localplan@tmbc.gov.uk

Write TMBC Local Plan Gibson Building Gibson Drive, Kingshill. ME19 4LZ

much more at [www.boroughgreen.gov.uk/local-plan-2022](http://www.boroughgreen.gov.uk/local-plan-2022)

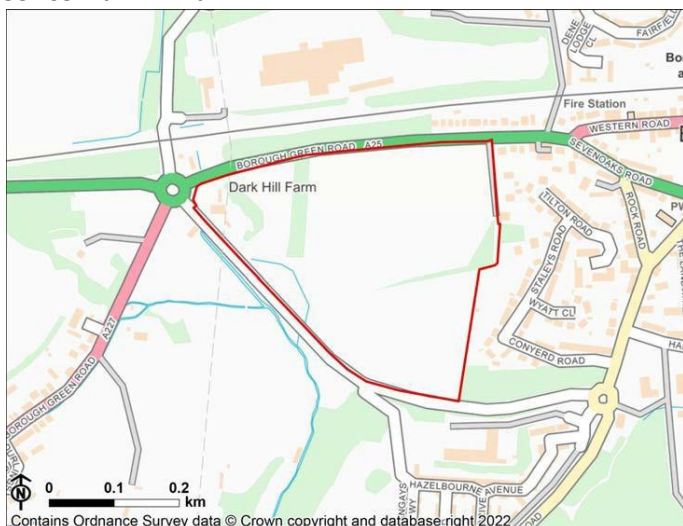
59720 Gracelands



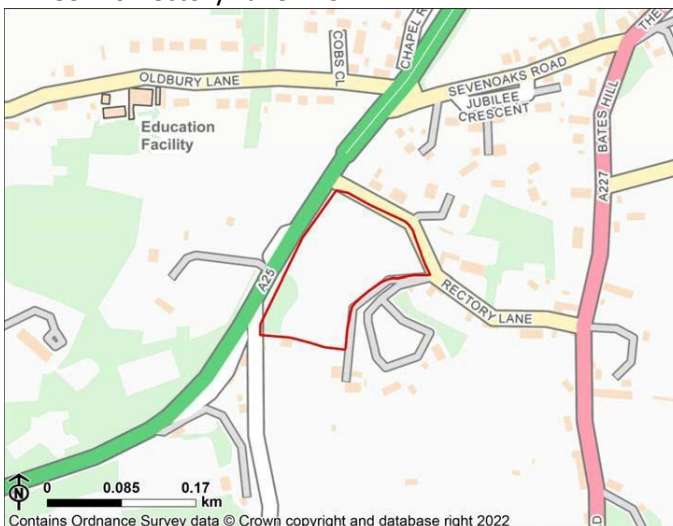
59871 Gracelands



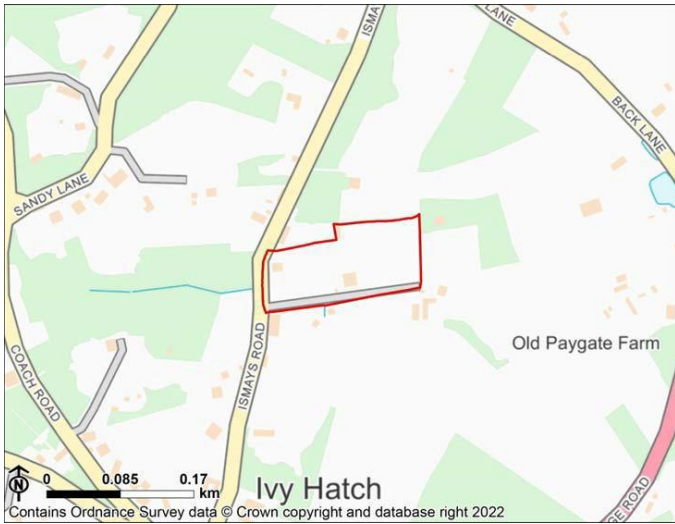
59709 Darkhill Farm



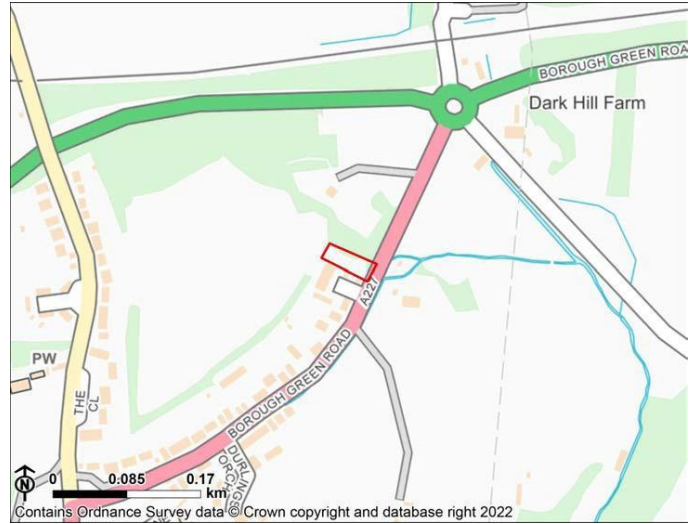
59770 Rectory Lane A25



59608 ISMAYS RD



59793 BG Road



59872 IGHTHAM BYPASS 59880



59830 Borough Green Garden City

