

ADDINGTON LOCAL PLAN SITES

Q5 & Q6 SPATIAL OPTION CHOOSE #ONE - DEVELOPMENT ONLY ON NON-GREENBELT LAND

Site No	Name	Planning Considerations	
59610	Park Rd		
59628	Millhouse Lane		
59850	East of village, off East St		
59812	A20 Clearways		
59830	Borough Green Garden City	3000 houses	

Respond to localplan@tmbc.gov.uk

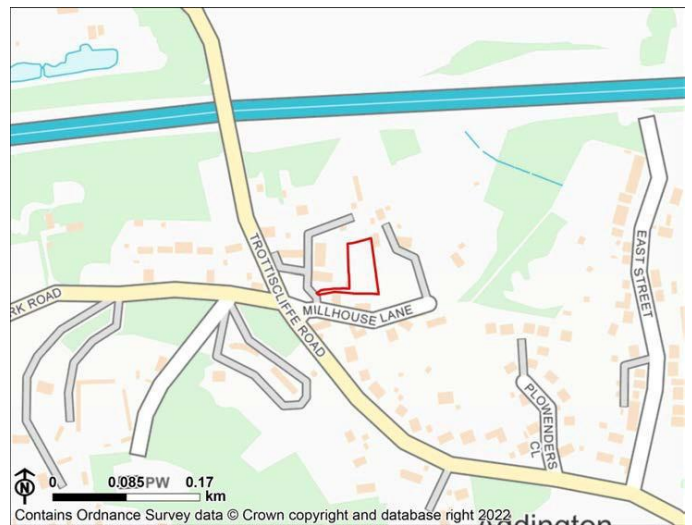
Write TMBC Local Plan Gibson Building Gibson Drive, Kingshill. ME19 4LZ

much more at www.boroughgreen.gov.uk/local-plan-2022

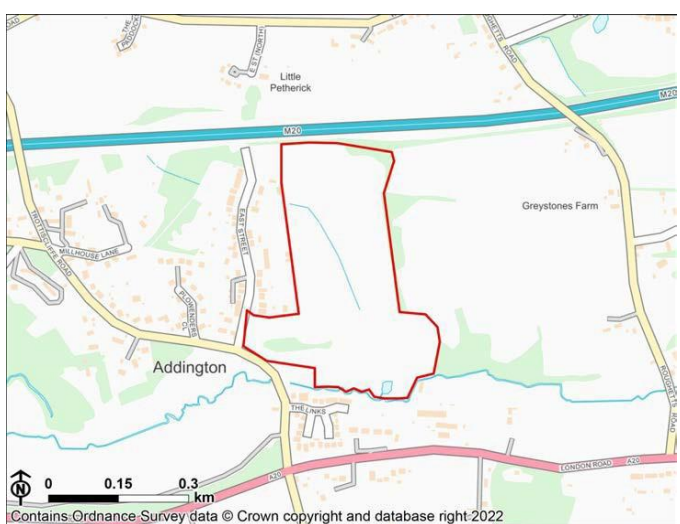
59610 Park Rd



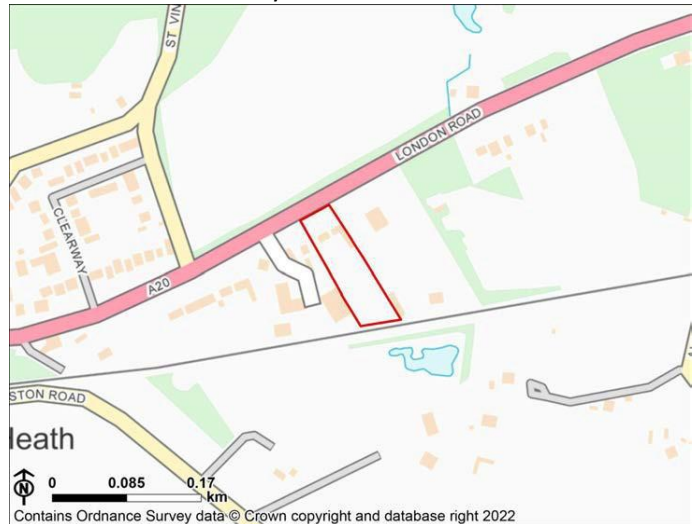
59628 Millhouse Lane



59850 East St



59812 A20 Clearways



59830 Borough Green Garden City

